

GREETINGS



*From*

TYNEMOUTH

OFFICIAL  
GUIDE

# PARK HOTEL

**TYNEMOUTH**  
**Northumberland**

THE MOST MODERN HOTEL ON THE  
NORTH EAST COAST

Situated at the end of the New Coast Road  
with a commanding position overlooking  
the sea

Fully Licensed A.A. and R.A.C. appointed

Excellent service and cuisine

Weddings and Private Parties a Speciality

## **BALLROOM**

**Dinner Dance every Saturday**

*Evening Dress*

All enquiries to the Resident Manager

Tel. North Shields 1766

*Proprietors:*

Scottish & Newcastle Breweries Ltd.

# GRAND HOTEL

ESPLANADE TYNEMOUTH

*Tele.: NORTH SHIELDS 1360*

A.A. \*\*\* & R.A.C.\*\*\*

*Comfortable accommodation*

*Passenger lift*

*Television lounge*

## THE VIKING GRILL ROOM

AND

## KON TIKI BAR LOUNGE

open until 10.30 p.m.

—::—

DINNER DANCES in the

## ORCHID BALLROOM

every Saturday night

—::—

*Visit also the famous TROLL CLACHAN BARS*

A HAMMONDS UNITED BREWERIES HOTEL

# **TYNEMOUTH CORPORATION** **ENTERTAINMENTS DEPARTMENT**

## **SCALE OF CHARGES**

### **OPEN-AIR BATHING POOL** **Chlorinated and Filtrated Water**

	£	s.	d.
Admission to Bathing Pool, including use of Cubicles			
Adults .. .. .	1	0	
Children .. .. .		6	
Admission to Bathing Enclosure: Adults .. .. .		6	
Children .. .. .		3	
Season Tickets, unlimited admission with Bathing: Adults ..	1	0	0
Season Tickets, 30 Admissions with Bathing: Children up to 15		5	0
Season Tickets, 30 Admissions with Bathing: Children 15-18		7	6

Showers available

### **BEACH**

#### **Long Sands, King Edward Bay, and North and South sides of Cullercoats Bay**

	£	s.	d.
Use of Bathing Tent, per person: Adult .. .. .			6
Children .. .. .			3
Use of Beach Tent, per week, June, July or August .. ..	1	5	0
Use of Beach Tent, per week, May or September .. ..	1	0	0
Ditto, per day, until 7 p.m. (plus 1/- deposit) .. .. .		5	0
Ditto, between 3 and 7 p.m. (plus 1/- deposit) .. .. .		3	6
Deck Chair, per day until 7 p.m. (plus 6d. deposit) ..		1	6
Ditto, for three hours (plus 6d. deposit) .. .. .		1	0
Private Tents, Bivouacs, etc., per day .. .. .		3	0

# TYNEMOUTH PARK

## FIVE HARD TENNIS COURTS. LAKE BOATING THREE BOWLING GREENS

TENNIS				s.	d.
Singles or Doubles, per court:	per hour	..	..	3	0
	per half-hour	..	..	1	6
Children under 16 years, per court:	per hour	..		2	0
	per half hour	..		1	0

BOATING					
Per Boat, per half hour:	one person	..	..	..	1 0
	two persons	..	..	..	1 0
For each person in excess of two, half-hour					6

BOWLS					
Per person, per hour	..	..	..	..	9

(Special charges at all Parks for Old Age Pensioners).

Bowling Greens also at Northumberland Park, West End Park and Smith's Park.

---

Putting and Tennis at Smith's Park.

Tennis at Scorer Street Playfield.

Putting, per player per round	..	..	..	3d.
-------------------------------	----	----	----	-----

---

Cycles may be left in Public Shelter opposite Tynemouth Park.  
Adults 6d.; Children 3d.

WHEN ON  
YOUR

HOLIDAYS

YOU CAN  
SPEND

JOLLY-DAYS

and NIGHTS

AT THE

PLAZA

TYNEMOUTH

**"The Show Place of the North"**

**on the sea-front**

SPACIOUS BALLROOM

MODERN THEATRE

ROLLER SKATING RINK

AMUSEMENT PARK

EXHIBITION HALL

LICENSED BARS and CAFE

and the new

FABULOUS POLYNESIAN LICENSED BUFFET

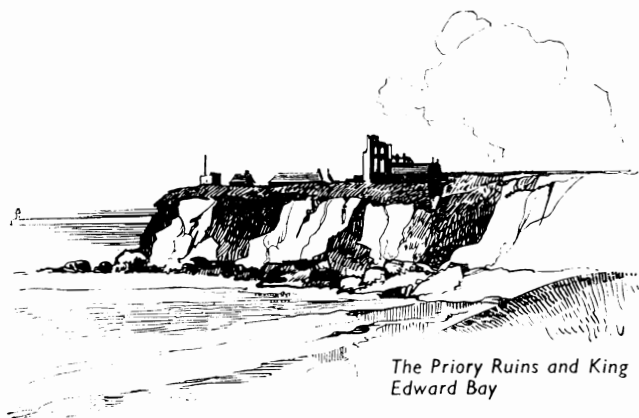
**THE BEACHCOMBER**

**"THE LUXURY RENDEZVOUS OF THE NORTH EAST"**

Welcome  
to

# Tynemouth

and CULLERCOATS



The Priory Ruins and King  
Edward Bay

## THE OFFICIAL GUIDE

*with the Compliments of the*

**TYNEMOUTH CORPORATION**

Enquiries to .  
Entertainments and Publicity Officer .  
**ANTHONY D. REAY**  
Telephone : North Shields 70961

(Eleventh Edition) 1962—1963

## PRINCIPAL CONTENTS

	<i>Page</i>
Introductory .. .. .	9
The Long Sands and the Open Air Bathing Pool .. .. .	12
The Plaza's Attractions .. .. .	12
Tynemouth Park .. .. .	13
Cullercoats .. .. .	17
Sports, Social Life and Entertainment .. .. .	19-20
Places of Interest .. .. .	21 to 23
Geological Features .. .. .	24
North Shields—	
The Fishing Industry .. .. .	26
Other Industries .. .. .	27
Scope for New Enterprises and Where to Apply .. .. .	27
Parks and Public Buildings .. .. .	28
Tynemouth Flower Show .. .. .	31
Miscellaneous Information .. .. .	32-36
Excursions by Road and Rail .. .. .	37
Road Map .. .. .	40
Street Plan of Borough .. .. .	<i>Facing</i> 56
Index to Advertisers .. .. .	56

## ACKNOWLEDGEMENTS

<b>SHIELDS WEEKLY NEWS</b>	
It's lovely .. .. .	7
Enjoying the Briny .. .. .	10
Another view of Prior's Haven showing Headquarters of the Sailing and Rowing Clubs .. .. .	24
Judging in progress at the Flower Show .. .. .	31
<b>EVENING CHRONICLE</b>	
Bathing Pool Fountain and Children's Paddling Pool .. .. .	7
" Miss Tynemouth " 1961 — Dorothy Jardine .. .. .	8
" Miss Tynemouth " 1961 — with some of the finalists .. .. .	10
Tynemouth Priory looking east towards Tyne entrance .. .. .	22
A Peaceful Scene at the Fish Quay, North Shields .. .. .	25
Beauty amid the blooms .. .. .	31
Competitors in the Final of the 1961 " Miss Tynemouth " Contest .. .. .	35
Another View of the Long Sands (South-End) .. .. .	36
<b>NEWCASTLE JOURNAL</b>	
Stately Homes Guide .. .. .	11
<b>RICHARD N. JONES</b>	
The Long Sands looking South towards Bathing Pool .. .. .	14
One of the Bowling Greens in Tynemouth Park showing also the Shelter and Cafe .. .. .	15
Tynemouth Park Boating Lake, with Plaza in background .. .. .	15
Cullercoats Harbour .. .. .	16
Prior's Haven and North Pier Approach .. .. .	22
Long Sands (Centre) looking North towards Cullercoats .. .. .	37
<b>T. H. N. JACKSON, WHITLEY BAY</b>	
Tynemouth Bathing Pool .. .. .	14
<b>T. REIGAR</b>	
View from North Pier looking westwards showing Prior's Haven, Colling- wood Monument and the Volunteer Life Brigade House .. .. .	25
View from the Pier showing the Priory Ruins and the Coastguards Head- quarters .. .. .	35
<b>F. BREWIS</b>	
A Boatload of happy children being towed by two models of the Tynemouth Model Boat Club .. .. .	27



**EVERYTHING FOR THE  
CHILDREN**



It's LOVELY

**BATHING POOL  
FOUNTAIN AND  
CHILDREN'S  
PADDLING POOL**





“ MISS TYNEMOUTH ” 1961 — DOROTHY JARDINE

## GUIDE TO TYNEMOUTH

Tynemouth, a delightful Holiday Resort pleasantly situated on the coast some eight miles east of Newcastle upon Tyne, has, since the very beginning of the last century, been a fashionable bathing place and health resort.

The sunshine here is tempered with bracing air, and the climate is notably dry and invigorating—an ideal background for a happy holiday.

The holiday playground stretches from Prior's Haven northwards to Cullercoats Bay and includes some of the finest stretches of golden sands in Great Britain.

The Long Sands are over a mile in length, and even at the highest tides there is a very large expanse of beach available.

To the south of the Long Sands there are two lovely bays, King Edward Bay, with its golden sands and marine promenade and cliff walks, and a little further south is Prior's Haven (see page 23). Both of these bays command delightful sea views and afford ample opportunities for rest and relaxation.

To the north of the Long Sands is situated Cullercoats Harbour and Bay. A delightful old-world spot about which you can read on page 17.

All beaches are manned by experienced Beach Patrols with modern surf boats and equipment. The precautions for the safety of bathers are of a very high order.

There is a first-class Open Air Bathing Pool at the south end of the Long Sands, where numerous and varied attractions are held during the season.

To the pleasures of a Tynemouth holiday must be added the wonderful Northumbrian scenery and historic places in which the neighbouring countryside abounds. Included in the latter are the numerous Castles and Peel Towers and the Roman Wall itself.

Until the Union of the two Kingdoms, Northumberland was for centuries the buffer state between England and Scotland, and many relics of this long history remain in evidence.



" MISS TYNEMOUTH " 1961 — WITH SOME OF THE FINALISTS

ENJOYING THE BRINY



## STATELY HOMES GUIDE

Northumberland, Durham, and Cumberland have their share of Britain's heritage, and below is a list of the stately homes and gardens within a radius of 40 miles of Tynemouth.

**ALNWICK CASTLE** — This famous Border fortress contains many treasures and heirlooms, including a museum of British and Roman antiquities. The castle is an important example of medieval fortification dating to the 12th Century. Open 1 p.m. to 5 p.m. Wednesdays, Thursdays, Fridays, Saturdays up to June 24th ; daily, June 26th to September 2nd. Admission fee : 2s. 6d. Children 1s.

**BARNARD CASTLE** — The Bowes Museum : Built in the style of a French chateau and noted for its fine collection of paintings and works of art — they include master-pieces by El Greco, Goya and Primaticcio. Open 10 a.m. to 5.30 p.m. Admission 1s. Children 6d.

**DURHAM CASTLE** — The Norman castle of the prince bishops which has been used by Durham University since 1832. Open 2 p.m. to 5 p.m. Mondays, Wednesdays, Saturdays, May and June ; 10.0-12.30 and 2.0-5.30 daily July, August and September. Admission 1s. 6d. Children 1s.

**HOWICK GARDENS** — This is a "must" for garden-lovers. Particularly beautiful are the rhododendron gardens. Open 2 p.m. to 7 p.m. Admission 1s. 6d. Children 6d.

**LUMLEY CASTLE** — A combination of medieval and classical architecture. Visits are allowed by arrangement with the Steward. Telephone : Chester-le-Street 3267.

**NAWORTH CASTLE** — Tenth Century, but in present shape early Tudor. The castle is open all the year for visitors — on Tuesdays and Thursdays. Open 11 a.m. to 5 p.m. Admission 1s.

**RABY CASTLE** — Principally 14th Century with some alterations made in 1765 and mid-19th Century. Ten acres of gardens, particularly noted for sweet peas. Open 2 p.m. to 5 p.m., Wednesdays, Saturdays and Bank Holidays. Admission 2s 6d. Children 1s. 6d.

**CRAGSIDE GROUNDS, ROTHBURY** — Extremely attractive grounds with rhododendrons, rock gardens and artificial lakes. Open 10 a.m. to 8 p.m. Admission 1s. 6d. Children 9d. Cars 2s.

**SEATON DELAVAL HALL** — Masterpiece of Sir John Vanbrugh. Treasures include Royal seals. Eighteenth Century gardens restored. Open 2 p.m. to 7 p.m. Admission 2s. Children 6d. (Wednesdays only).

**WALLINGTON HALL** — Built 1688, altered 18th Century. The walled and terraced garden laid out in 1766. Open 2 p.m. to 4.30 p.m. Admission 2s. Children 1s. (Weekends and Bank Holidays).

**WASHINGTON OLD HALL** — A Jacobean manor house. Open 10 a.m. to 1 p.m. and 2 p.m. to 6 p.m. Admission 1s. Children 6d.

## THE LONG SANDS

are notable for their breadth as well as their length. When you have a bathe here you walk to the water's edge on firm, smooth GOLDEN SAND and not on shingle.

The beach is extremely popular with the children. On the landward side the youngsters are catered for in the way of swings, roundabouts, pony rides and other attractions.

Adult bathers have ample dressing accommodation at their disposal, and tents and deck chairs are available on hire from the attendants at the various beach stations at reasonable charges.

## THE OPEN AIR BATHING POOL

offers many and varied attractions, and is an extremely popular rendezvous. The comfort of bathers and spectators is carefully fostered.

The water is regularly cleansed and renewed by a modern filtration and chlorination plant which ensures a complete change of water every eight hours. The Pool is 180 feet long by 60 feet wide, and the water shelves from a depth of  $6\frac{1}{2}$  feet to  $3\frac{1}{2}$  feet. There is a specially constructed paddling pool for the children where even the tiniest of mites may play in safety.

The dressing accommodation is first class, and shower baths are available to add to the pleasures of a swim.

Refreshments can be obtained at the Pool, and one can listen to popular music.

Accommodation at the Pool is taxed to its limit on most Wednesday afternoons during the season, when swimming galas, fashion parades, diving exhibitions, water polo matches, "Bonnie Bairns", and the "Miss Tynemouth" beauty competitions are held. In the two latter competitions heats are held on Wednesdays from July onwards, with the finals in August (pages 8, 10 and 35).

## THE PLAZA

A familiar feature overlooking the long sands is the Amusement Centre, The Plaza, which occupies a very fine site on the attractive Grand Parade, and may be regarded as the premier centre of entertainment.

The Ballroom is one of the finest in the North Country. It is decorated and furnished in luxurious fashion and has a perfect maple dance floor. The Ballroom has its own resident orchestra.

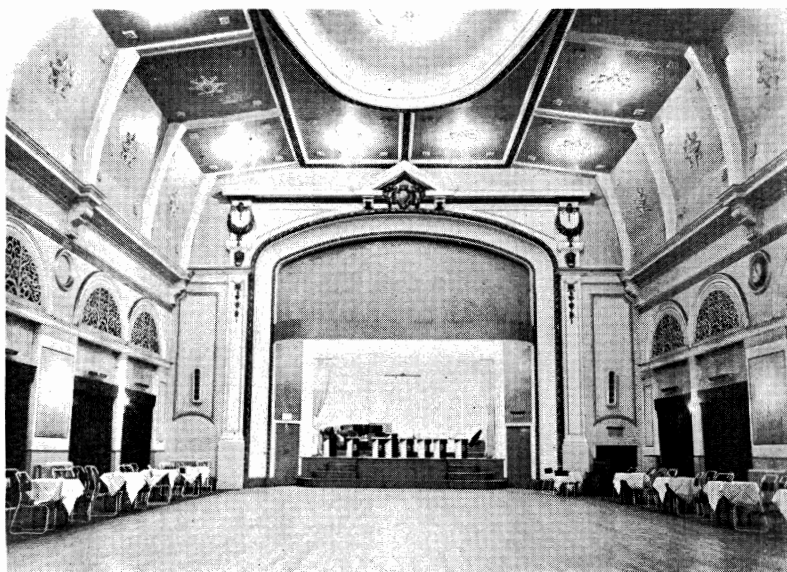
The Plaza Repertory Theatre, attractively designed and furnished to modern requirements, is acknowledged to be one of the most unique in the country. A West End company presents the latest plays, comedies, as well as old favourites, which are changed weekly.

The Plaza is fully licensed, a new innovation being the fabulous "Beachcomber Bar".

Roller skating enthusiasts may enjoy skating in the Exhibition Hall, on the perfect floor, all the year round.

The Plaza Beach Amusement Park provides "fun for the family" with rides, games and amusements.

There is ample free car parking space adjoining.



THE PLAZA BALLROOM

## TYNEMOUTH PARK

This adjoins the Grand Parade, on the west side, and is a most popular resort, being beautifully laid out and containing a large lake for boating and the sailing of model yachts. There are three first class bowling greens, five tennis courts, an open air draughts board, numerous seats and a large shelter with a cafe and shop adjoining.

Very popular events are the annual boat races for children on the lake in Tynemouth Park, for which the Plaza Diamond Sculls Challenge Trophy is awarded on a handicap basis to the winner of that event, and the competitions run by the Tynemouth Model Boat Club (Power and Sail).

An attractive feature is the Garden of Remembrance, which was dedicated as a memorial to Henry George Alan, ninth Duke of Northumberland, who was killed in action on the 21st May, 1940, and to all members of H.M. Forces from the County Borough of Tynemouth who died in the service of their King and Country during the Second World War. The Park was presented to the Borough by Hugh Algernon, tenth Duke of Northumberland, in August, 1949.



THE LONG SANDS LOOKING SOUTH TOWARDS BATHING POOL

TYNEMOUTH BATHING POOL

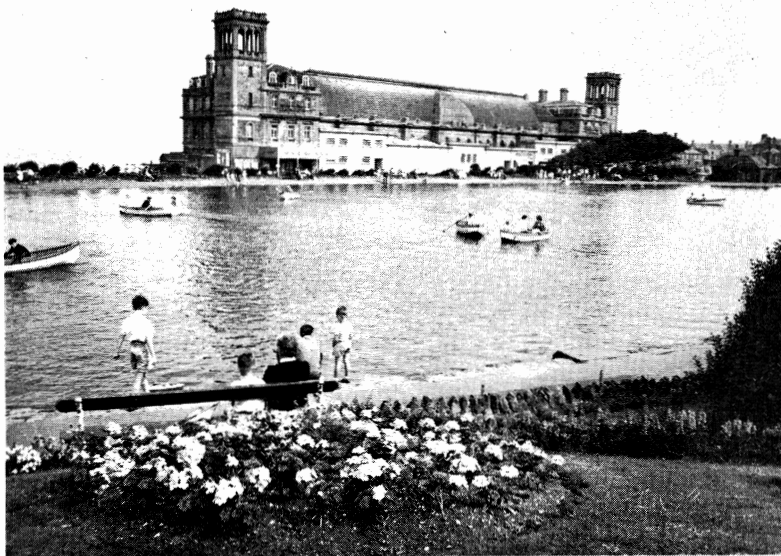


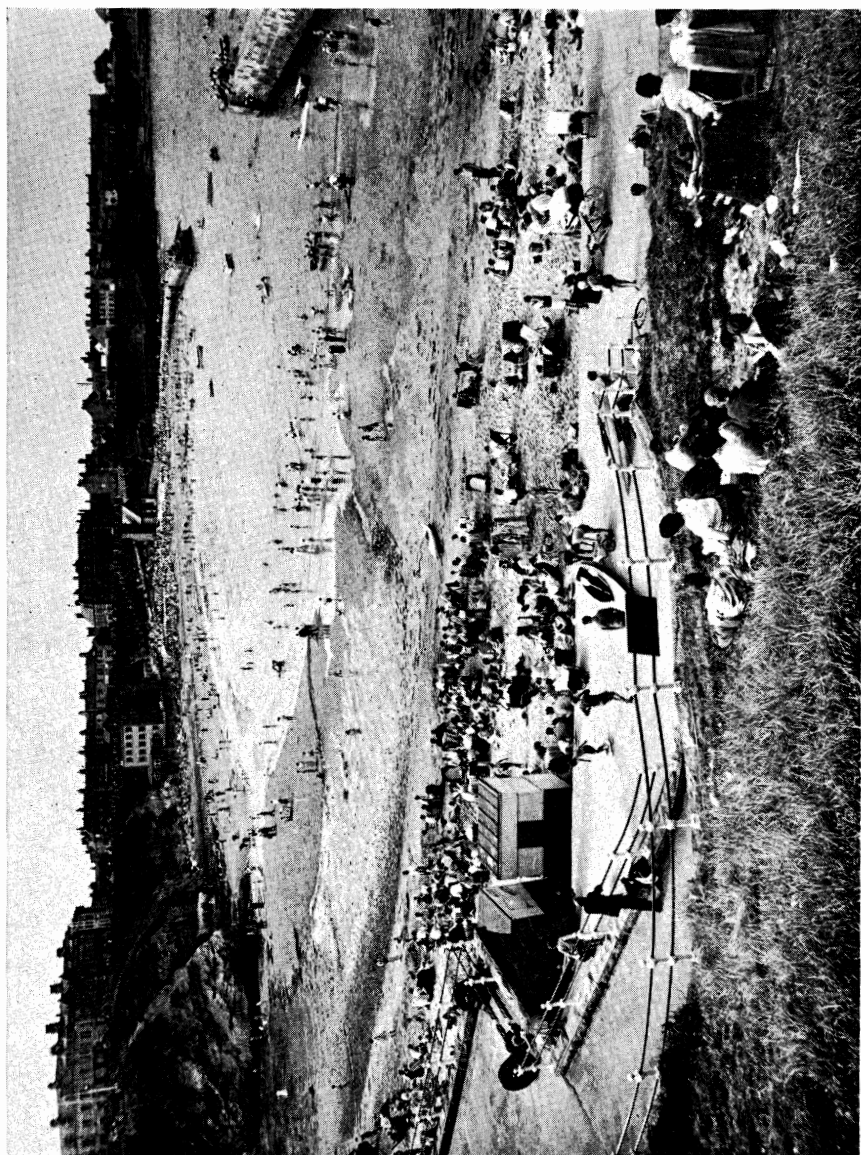




ONE OF THE BOWLING GREENS IN TYNEMOUTH PARK,  
SHOWING ALSO THE SHELTER AND CAFE

TYNEMOUTH PARK BOATING LAKE, WITH PLAZA IN BACKGROUND





CULLERCOATS  
HARBOUR

## CULLERCOATS

A very appropriate name for a suburb of the Borough which attracts many artists every season. Peace must always have been associated with this charming village. Its very name is said to mean dove-cotes, though the reason for this has never been properly established.

Its most outstanding family was the Dove family, which was associated in turn with the Dove of Peace and the Society of Friends. The family name is still retained in one of its main buildings, the **Dove Marine Laboratory**, which is part of King's College (University of Durham), Newcastle. It carries on scientific research into the fundamental aspects of life in the sea and pays special attention to problems of the local fishing industry. Most of the laboratory is not open to visitors, but on the ground floor is a well arranged aquarium, to which the public is admitted, where marine fishes and other forms of sea life of the district are displayed, living under attractive conditions. Open daily, 10—5, except Sundays. Adults 1/-, children 6d. School classes free on prior application to The Director.

The charms of this old-world fishing village attract many visitors. The Bank Top overlooks a very pleasant and sheltered Bay, which is protected by breakwaters enclosing a picturesque harbour. The Bay, with its firm golden sands, makes an excellent bathing place, and deck chairs can be hired at both the North and South sides of the beach.

Near the picturesque **Watch House**, on the Bank Top, many visitors make a point of chatting with the residents during the summer evenings and thus hear many a stirring old time story of hazard and rescue.

FOR A HAPPY HOMELY HOLIDAY

### ***CLIFFEDGE GUEST HOUSE***

**10, Beverley Terrace**

**CULLERCOATS . NORTH SHIELDS**

*Telephone: WHITLEY BAY 26043*

**Our Speciality Home Made Cakes and Bread**

Sea front (overlooking beaches), highly recommended,  
comfort assured, Board Residence, Bed and Breakfast.

Open all the year

**Central Heating**

*Your Hostess . . . Mrs. C. HALL*

**THE  
CARLTON CINEMA  
FRONT STREET  
TYNEMOUTH**

PRESENTS ALL THE BEST FILMS  
WITH THE MOST UP-TO-DATE  
EQUIPMENT AND IN LUXURIOUS  
COMFORT

— :: —

*CONTINUOUS DAILY from 5.30 p.m.*

— :: —

A News reel is included in most programmes

**SUNDAY FILM SOCIETY**

shows during the

AUTUMN AND WINTER

*All programmes advertised in the local Press*

## SPORTS, SOCIAL LIFE AND ENTERTAINMENT

- Boating.** Tynemouth Park, Grand Parade, Tynemouth.
- Bowls.** Public Bowling Greens will be found in Tynemouth Park, Grand Parade; in Northumberland Park, Tynemouth Road; in West End Park and Smith's Park, Howdon Road, North Shields.
- Cricket.** Tynemouth Cricket Club, Preston Avenue, North Shields. Percy Main Cricket Club, Percy Main.
- Football.** Percy Park Rugby Football Club, Preston Avenue, North Shields. Also N.S. Rugby Football Club, Preston Village, North Shields and Tynemouth Rovers Rugby Football Club, Cullercoats. Association Football (Northern Counties League), Appleby Park, North Shields.
- Golf.** Tynemouth Golf Club, King Edward Road, Tynemouth. (Five minutes' walk from Tynemouth Station. Full details as to fees, etc., from Secretary.)  
A playing field for children near the sea front is a pleasant feature. There is a frequent service of buses along the sea front from Tynemouth to Cullercoats, and the railway station, which is only 300 yards from the Bay, is on the electrified line from Tynemouth and Newcastle upon Tyne.
- Swimming.** Tynemouth Open Air Bathing Pool, south end of Long Sands. Tynemouth Amateur Swimming Club, Hawkey's Lane Baths, North Shields; Cullercoats Swimming Club, Cullercoats Bay.
- Tennis.** Prior's Park, Bath Terrace, Tynemouth; Preston Avenue; Preston Park; Percy Park Rugby Field, North Shields; Tynemouth Park, Grand Parade, Tynemouth; Scorer Street and Smith's Park, North Shields.
- Yachting.** Tynemouth Sailing Club, Prior's Haven, Tynemouth. Tynemouth Model Boat Club (Power and Sail), Tynemouth Park.
- Rowing.** Tynemouth Rowing Club, Prior's Haven, Tynemouth.
- Sea Angling.** Borough of Tynemouth Angling Club.
- Round Table.** Dinner every 1st and 3rd Tuesday in month at 7.15 p.m. at Bay Hotel, Cullercoats.
- Rotary.** Luncheon every Tuesday at 12.45 p.m. at Masonic Hall, Albion Road, North Shields (except Public Holidays).
- Inner Wheel.** Every third Monday in month at 2.30 p.m. at Roselyn Hall, Stephenson Street, North Shields.
- Tynemouth B. & P. Women's Club.** Mondays and Wednesdays on alternate fortnights at 7.30 p.m. at the Youth Centre, Church Way, North Shields.
- Soroptomist Club of Tynemouth.** Second and fourth Mondays in month at 7.30 p.m. at the Conservative Rooms, Percy Park Road, Tynemouth.
- Toc H.** Polytechnic House, Bedford Terrace, North Shields. Ladies at 7.30 p.m. on Thursdays, Gentlemen at 8. p.m. on Tuesdays.
- Y.M.C.A. and Y.W.C.A.** Church Way, North Shields, and Marden Avenue, Cullercoats.

**Cinemas.** Carlton, Front Street, Tynemouth; Albion, Albion Road, North Shields; Rex, Billy Mill Avenue, North Shields; Gaumont, Russell Street, North Shields.

**Theatres.** Repertory, Plaza, Tynemouth (change of production weekly).

**Dancing.** Plaza Ballroom, Grand Parade, Tynemouth; Bath Assembly Rooms, Bath Terrace, Tynemouth; Albion Assembly Rooms, Norfolk Street, North Shields; Masonic Hall, Albion Road, North Shields.

**Dramatic Societies.** The Priory Theatre Club (performances at the Holy Saviour's Church Hall, Tynemouth); Collingwood Dramatic Society; Club 51 (performances held at Linskill School Hall, North Shields); Y.M. and Y.W.C.A. Revue Club, Youth Centre, Church Way, North Shields; Holy Trinity Players, Holy Trinity Church, Coach Lane, North Shields; St. George's Players, St. George's Church, Cullercoats.

**Operatic Societies.** Tynemouth Amateur Operatic Society; and the Tynemouth Gilbert and Sullivan Society.

**Photographic Society.** This has been flourishing for over fifty years and amateur photographers can receive much helpful advice as to choice and whereabouts of subjects by visiting the headquarters, above the Branch Library in Front Street, Tynemouth.

~ ~ ~

*Superior-Fitted Carpets*

*and*

*High Grade Furnishings*

*from*

**BRITAINS** Home Furnishers  
North Shields Ltd

Rudyerd St. to Little Bedford St.

NORTH SHIELDS 2006

# PLACES OF INTEREST

## THE CASTLE

Facing the Clock Tower at the foot of Front Street is the fortified gatehouse of The Castle, through which you pass to reach the Priory ruins.

Earl Tostig of Northumberland built a primitive fortress across the neck of the peninsula.

The Gatehouse has outer and inner barbicans and was built by John de Wheathampstead, Prior of Tynemouth in 1390.

## THE PRIORY RUINS

According to local legend there was a Church here as long ago as the year 627. Three Kings have been buried here, the first being St. Oswin, to whom with the Virgin Mary the Priory was dedicated.

Services are still occasionally held in the Percy Chapel.

The Castle Yard and Priory Ruins, and the grounds in which they stand, are in the custody of the Ministry of Works, to which department is largely due the admirable state of preservation of the ruins.

### ADMISSION

				<i>Weekdays</i>	<i>Sundays</i>
March to April	..	..	..	9.30—5.30	2. 0—5.30
May to September	..	..	..	9.30—7. 0	9.30—7. 0
October	..	..	..	9.30—5.30	2. 0—5.30
November to February	..	..	..	9.30—4. 0	2. 0—4. 0
Adults, 1/- each				Children (under 14), 6d. each.	

### Special Rates for Parties

Educational parties can be issued with a permit allowing entry free of charge by addressing a request to the Ministry of Works, R.D.I. Administration, Lawnswood, Leeds, 16.

The services of a guide are available.

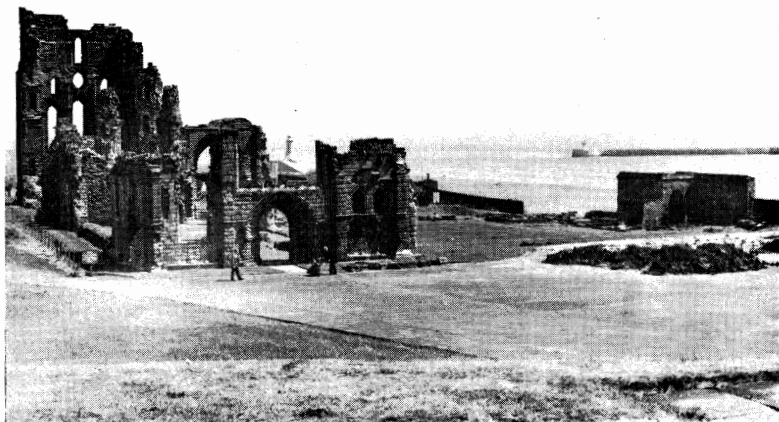
Regaining the road from Front Street and bearing left down the slope Pier Road you reach

## THE NORTH TYNE PIER

which is nearly three-quarters of a mile long and is a very popular promenade. At the extreme end is the lighthouse. Visitors walking along the pier can enjoy watching the passage of ocean-going passenger ships and cargo vessels arriving in and departing from the River Tyne, including the Norwegian, Danish and Swedish Mail Boats.

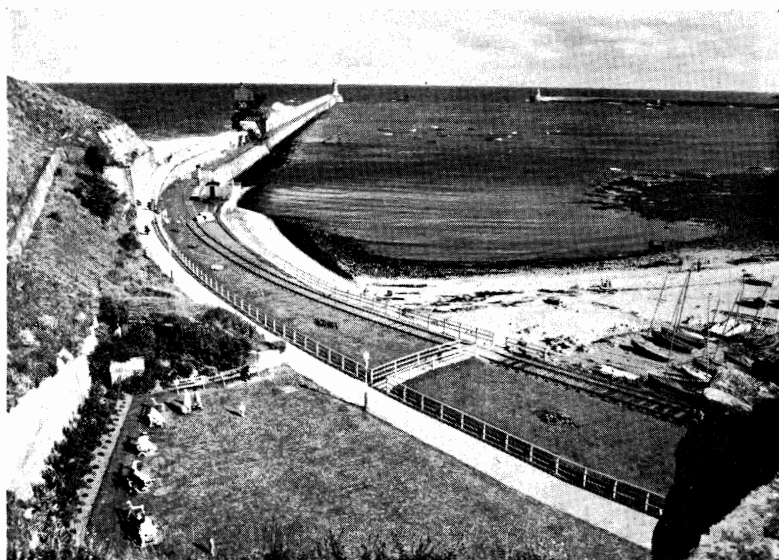
Wonderful views can also be had of the mouth of the Tyne, the Priory Ruins and the coast-line to the North and South.

From the Pier Road you also reach



TYNEMOUTH PRIORY LOOKING EAST TOWARDS TYNE ENTRANCE

PRIOR'S HAVEN AND NORTH PIER APPROACH





## PRIOR'S HAVEN

a most beautiful sandy bay sheltered by the North Pier and the Priory headland. Great improvements have been carried out here in recent years by Tynemouth Corporation and the Ministry of Works, the banks and adjacent land being Crown property. Here are the headquarters of the Tynemouth Amateur Rowing and Sailing Clubs, and owing to its sheltered position the cove is ideal for boating and fishing. The roads ascending from Prior's Haven divides, the right hand fork passing the Tynemouth Volunteer Life Brigade headquarters and Watch House, notable as being the place where the first Volunteer Life Brigade in the country was established as far back as 1864.\*

This Watch House is well worth a visit to see the very fine collection of relics of wrecks which occurred at the mouth of the harbour during the nineteenth century.

## THE COLLINGWOOD MONUMENT

situated in close proximity to the Watch House was sculptured by J. G. Lough of Newcastle, and stands on a pedestal of granite overlooking the river. Magnificent views are afforded to those visiting the monument. You ascend a flight of steps to read the inscription, which runs: "This monument was erected in 1845 by public subscription, to the memory of Admiral Lord Collingwood, who, in the *Royal Sovereign*, on the 21st October, 1805, led the British fleet into action at Trafalgar, and sustained the sea fight for upwards of an hour, before the other ships were within gun-shot, which caused Nelson to exclaim, 'See how that noble fellow Collingwood takes his ships into action!' "

Cuthbert Collingwood was born in 1748 at Newcastle, and educated there. In the city is a principal street bearing his name, and he had a residence at Chirton (within Tynemouth Borough), which partly accounts for the monument standing where it does.

He died at sea off Minorca on board the *Ville-de-Paris*, on March 7th, 1810, and is buried in St. Paul's Cathedral.

On either side of the Monument are mounted four guns taken from the *Royal Sovereign*, his flagship at Trafalgar.

\* Incidentally, William Wouldhave, the inventor of the unsinkable type of lifeboat, was a native of Tynemouth.

## GEOLOGICAL NOTES

The following details supplied by the Department of Geology of King's College, Newcastle-upon-Tyne will be of interest to Geologists:—The rocks on the shore tell the story of the varying conditions which, at different times through the ages, have embraced the area now known as the County Borough of Tynemouth. The delta deposits are now layers of sandstone which, at low tide, outcrop in the bay north of Brown's Point. In between these layers are the coal seams, rich in fossil trees, ferns and roots, which were once masses of steaming tropical vegetation. The great cliff of Tynemouth, on which the castle stands, was formed on the bed of the open sea that once stretched over Eastern England and over much of Germany.

7 7 7

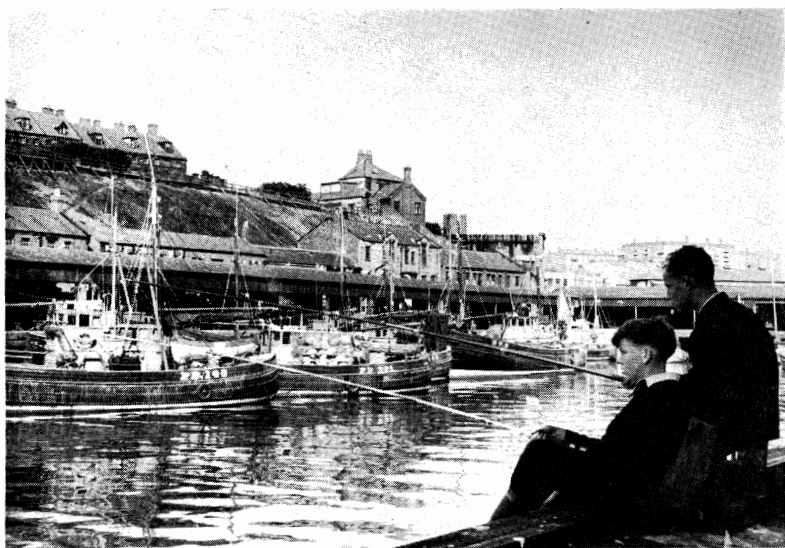
ANOTHER VIEW OF PRIOR'S HAVEN SHOWING HEADQUARTERS OF THE  
SAILING AND ROWING CLUBS

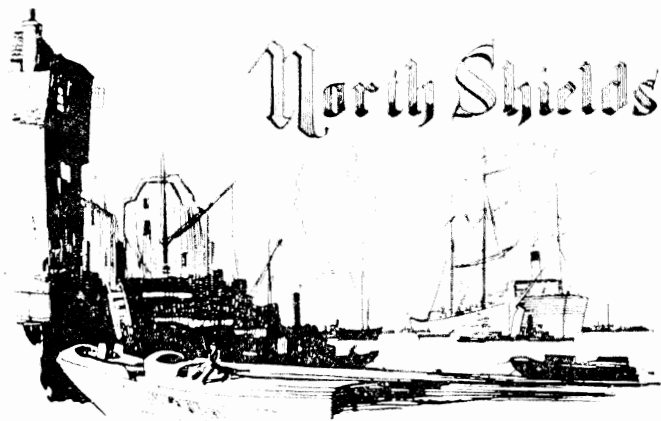




VIEW FROM NORTH PIER LOOKING WESTWARDS SHOWING PRIOR'S HAVEN,  
COLLINGWOOD MONUMENT AND THE VOLUNTEER LIFE BRIGADE HOUSE

A PEACEFUL SCENE AT THE FISH QUAY, NORTH SHIELDS





## THE FISHING INDUSTRY

Fishing has been carried on at North Shields from time immemorial, but it was first placed on an organised footing in the year 1225 when Germanus, Prior of Tynemouth, caused "sheels" or fishermen's huts to be erected on the site of the present Fish Quay. This was the origin of North Shields.

It is interesting to note that in the year 1877 Mr. William Purdy, a North Shields tug owner, conceived the idea of utilising his steam tug *Messenger* for the purpose of trawling, with immediate and marked success. Thus the steam trawler came into existence, and North Shields has reason to be proud of being the birthplace of this method of fishing.

A visit to the Fish Quay and Fish Market, should certainly be included in at least one itinerary.

"The Wooden Dolly", now in Northumberland Square, North Shields, is known to Sailors all over the world.

## INDUSTRIES

The main activities of the port in addition to the fishing industry, are ship repairing and reconditioning, the importation and transhipment of general cargoes, coal bunkering, and the passenger steamer services to Scandinavia and elsewhere on the Continent. Many of these steamers also carry mails.

With these are linked up many and varied ancillary trades, such as the preservation and canning of fish and other food stuffs, the founding of metal, haulage, box-making, ice-making, sail, rope, and net-making, ship chandlery in all its phases, engineering, and, indeed, practically every trade that one would expect to find in a busy seaport.

On a modern Trading Estate developed since 1945 there are established a well balanced selection of light industries manufacturing a wide range of products including plastics, confectionery, clothing, furniture, lighter fuel, aircraft components, bedding, electrical switchgear and metal sections.

## SCOPE AND NEW ENTERPRISES

*North Shields offers exceptional opportunities to those who may be seeking facilities for the creation of new enterprises, or the development of existing industries.*

In addition there is a revitalised and flourishing fishing industry at North Shields. The Fish Quay is owned and operated by the Council who would welcome participation by new trawler owners and merchants.

For details of facilities available write to the Town Clerk, Northumberland Square, North Shields. All enquiries will receive prompt and careful attention.

A BOATLOAD OF HAPPY CHILDREN BEING TOWED BY TWO MODELS OF THE  
TYNEMOUTH MODEL BOAT CLUB



## PUBLIC PARKS

Besides Tynemouth Park, already mentioned, there is the delightful natural ravine known as Northumberland Park between Tynemouth Road and King Edward Road. Most of the trees here are of mature growth and practically as they were when the grounds were taken over for the benefit of the public. There are, besides, trimmed box hedges, beautiful flowerbeds, and pleasant walks with numerous seats for the pensive.

The West End Park, Howdon Road, North Shields, Smith's Park, and the Alexander Scott Park are open spaces of which the Borough is justly proud.

## PUBLIC BUILDINGS ETC.

THE PUBLIC LIBRARY is at the corner of Saville Street and Howard Street (bus stop), and has all the usual amenities, with Reading and Reference Rooms in addition to the Lending Department, and a Children's Library. Tickets issued by other Public Libraries may be used here or at any Branch Library by persons on holiday. THE TOWN HALL, on the opposite corner, is the centre of local government. There is also a branch of the Municipal Library at Cullercoats; other branch libraries are in Marina Avenue, Ridges Estate, North Shields, Front Street, Tynemouth, Coast Road, North Shields, and Buttermere Road on the Marden Estate. Hours of opening at Libraries on page 32.

On the Tynemouth Road corner of Mariners' Lane the HOMES FOR MASTER MARINERS, built by the then Duke of Northumberland in 1837, arrests attention, it being an imposing building with a clock tower. A statue of the Duke stands in front of it, and, incidentally, it may be remarked that the noble county family is well represented in the street nomenclature—e.g. Percy Street, Percy Park, Percy Park Road, West Percy Road and Street, Northumberland Street, and Hotspur Street.

Complete list of Places of Worship on page 34.

## NORTH SHIELDS PERMANENT BUILDING SOCIETY

75 HOWARD STREET, NORTH SHIELDS

*for*

*MORTGAGE and INVESTMENT  
SERVICE*

Assets £1,718,890

Reserves £92,638

*Secretary*

**O. P. CRANE**

**TAXI AND CAR HIRE**

**TAXI**

**service**

**Telephone North Shields**

**179 & 2030**

*For All Occasions—Day and Night Service*

**E. TURNBULL & SON**

**Limited**

**FUNERALS and CREMATIONS**

**ALBION ROAD NORTH SHIELDS**

**MOTOR  
ENGINEERS**



Telephone:  
North Shields 2030

**CAR SALES  
and SERVICE**



**TURNBULL'S GARAGE**

Proprietors: E. Turnbull & Son Ltd.

**ALBION ROAD and  
UPPER CAMDEN STREET**

**NORTH SHIELDS**

**Agents for Volkswagen**

A.A.

R.A.C.

# Baxters Teahouse and Barn Restaurant

(Table Licence)

:::

MORNING COFFEES

LUNCHES (HOT OR COLD)

TEAS - HIGH TEAS

SALADS - DINNERS

EVENING GRILLS

SUPPERS UNTIL 10.30 P.M.

:::

Telephone : North Shields 2476

:::

WHERE COMFORT AND HOMELINESS  
MEET

29 Front Street, Tynemouth





BEAUTY AMID THE BLOOMS

## TYNEMOUTH FLOWER SHOW

During July and August the Tynemouth Season is at its height. One of the outstanding attractions is the Flower Show held at Tynemouth on the Thursday, Friday and Saturday prior to August Bank Holiday.

This Show is undoubtedly one of the finest in the North of England.

The average daily attendance during each of the three days is 11,000.

Well-known exhibitors from all parts of the country exhibit in the Trade Section. There is also a very fine Industrial Section.

In addition to the many and varied exhibits, there are numerous attractions, including horse jumping contests, pony sports, mannequin parades, a veteran car rally, military band concerts, a rabbit show and a fireworks display.

Great care is taken to provide for the comfort of all visiting the Show, and first class catering facilities are available.

Should your holiday at Tynemouth coincide with the Flower Show we hope you will include a visit or visits in your itinerary during your stay.

Full particulars may be obtained from Mr. J. W. Mills, Honorary Secretary of the Show, 16 Longston Avenue, Cullercoats, North Shields.

JUDGING IN  
PROGRESS AT THE  
FLOWER SHOW



## MISCELLANEOUS INFORMATION

**Administration.** Tynemouth is a County Borough embracing besides the popular holiday resort, the industrial, fishing and shipping area of North Shields, Percy Main, Preston, Chirton, East Howdon, New York and the quaint old-fashioned fishing village and holiday resort, Cullercoats.

The Borough covers an area of 5,000 acres, and has an estimated population of 70,010.

In the year 1949 the Borough of Tynemouth celebrated the Centenary of the granting of its Charter of Incorporation.

The principal Local Government Offices are located as follows:—

*Town Clerk*—F. G. Egner, O.B.E., LL.B., 14 Northumberland Square, North Shields.

*Borough Treasurer*—W. R. Douglas, Howard Street, North Shields.

*Borough Surveyor*—D. M. O'Herlihy, O.B.E., 16 Northumberland Square, North Shields.

*Medical Officer of Health*—Dr. R. H. Dawson, Albion Road, North Shields.

*Chief Education Officer*—George Wilson, The Chase, North Shields.

*Chief Constable*—J. J. Scott, Police Headquarters, North Shields.

Council Meetings are held at the Town Hall, North Shields, on the last Wednesday of the month, at 6 p.m.

**Rates, 1962-63.** General—19s. 0d. in £. Water Rate—2s. 4d. in £.

**Bus Services.** The Central Bus Stand in Northumberland Square, North Shields, is an important link on the North Shields—Whitley Bay Service. Buses run from the New Quay, North Shields, through main business streets to Tynemouth, along the Grand Parade to Cullercoats, or along the Broadway, and so to Whitley Bay. There are convenient bus services to Newcastle, Backworth, Blyth, Holywell, Shiremoor, Wallsend and Morpeth.

**Distances by Road.** Alnwick, 36; Berwick-upon-Tweed, 65; London, 287; Morpeth, 17; Newcastle-upon-Tyne, 8; South Shields (ferry), 2; Sunderland (ferry), 9; Whitley Bay, 2; Durham City, 24; Farne Islands, 51; Bamborough Castle, 57; Holy Island, 62; Carlisle, 66; Keswick, 90; Windermere, 99; Edinburgh, 114.

**Early Closing.** Wednesday.

**Libraries.** Central Library, corner of Howard Street and Saville Street, North Shields. Hours of opening: Monday, Tuesday and Thursday, 10 a.m. to 7 p.m. Wednesday, 10 a.m. to 1 p.m. Friday, 10 a.m. to 8 p.m. Saturdays, 10 a.m. to 6 p.m.

*Junior Library*—Hours of opening: 11.45 a.m. to 1.30 p.m. and 3.45 p.m. to 6.30 p.m. on Monday, Tuesday, Thursday and Friday; 11.45 a.m. to 1 p.m. on Wednesday; 10 a.m. to 6 p.m. on Saturday. During School holidays the Library is open from 10 a.m. to 6.30 p.m. (Wednesday 10 a.m. to 1 p.m.) (Saturday 10 a.m. to 6 p.m.)

There are **branch libraries** at Front Street, Tynemouth; 7 St. George's Road, Cullercoats; Marina Avenue, North Shields; Coast Road, North Shields, and Buttermere Road on the Marden Estate. The hours of opening and closing are the same as for the Central Library. There is also an evening branch at Murton School, open on Friday evenings from 5.30 p.m. to 7.30 p.m.

**Licensing Hours.** 10.30. am. to 3 p.m. and 6.0 p.m. to 10.30 p.m. Monday to Saturday. Sunday: 12 noon to 2 p.m. and 7 p.m. to 10.30 p.m.

**Newspapers.** "Shields Weekly News", Nile Street, North Shields; "Evening Chronicle" and "Newcastle Journal" Russell Street, North Shields.

### **Parking Places—County Borough of Tynemouth**

1. **Tynemouth.** Grand Parade—West side, from just North of the bus stop near traffic roundabout at Percy Park, to North entrance to Tynemouth Park; Park Hotel to St. George's Church; Sea Banks; Front Street—centre of road; East Street—opposite Gibraltar Rock Hotel; Station Terrace—South side; Oxford Street for Public Service Vehicles; Prior's Haven; Pier Bank; Grand Hotel to Beach.

2. **Cullercoats.** There are three car parks adjoining Front Street, Cullercoats. Huddleston Street—from Simpson Street to Eskdale Terrace (152 yards). St. George's Road to Beach.

3. **North Shields.** Lovaine Place—South side; Borough Road—West side (Railway Terrace to Stanley Street West); Howard Street—East side; (a) from Northumberland Square to Saville Street; (b) from Messrs. Bainbridges to Tyne Street; Lower Norfolk Street—East side (from Saville Street to Tyne Street); Military Road—West side (from Drill Hall to Brandling Terrace); Churchway—from the North door of the Sir James Knott Youth Centre to 5 yards North of Whitehart Lane; opposite Central Garage; Cleveland Road—North side, 88 yards West from Preston Road; Chirton Lane—East side, 164 yards from Regent Terrace; Lower Rudyerd Street—East side; Camden Street—East side, 84 yards from Northumberland Square.

4. **Car Parks.** New Quay Car Park; Junction of Wellington Street and Church Way; Wellington Street and Little Bedford Street; Brandling Terrace and Tynemouth Road.

**Note.** Public Service Vehicles bringing visitors to the Coast are required to park in Oxford Street, Tynemouth.

**Postal Facilities.** Head Office, Saville Street, North Shields. Hours of opening: 8.30 a.m. to 6 p.m., Monday to Saturday.

There are many Sub-Post Offices in the County Borough of Tynemouth.

**Welfare Milk.** If you or your children are getting cheap milk and you wish to continue to get it on holiday, be sure to bring your Milk Token Book(s) with you.

Telephone: NORTH SHIELDS 1098

**Mrs. L. I. PEACOCK**

WOOL and BABY LINEN SPECIALISTS

27 FRONT STREET

TYNEMOUTH

Telephone: NORTH SHIELDS 74010

**H. TOMBLING**

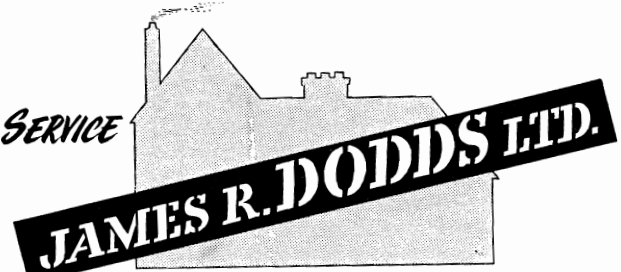
Grocer, Ale, Wine and Spirit Merchant

32 FRONT STREET, TYNEMOUTH

DAILY DELIVERIES TO ALL PARTS OF THE DISTRICT

### Places of Worship

- In the majority of the Churches listed the hours of service are 11 a.m. and 6.30 p.m.
- Christ Church.* This is the Parish Church of the Borough and it is situated at the corner of Albion Road and Preston Road, North Shields. This Church was rebuilt of hewn stone in 1792, and is in direct succession to the ancient Priory Church.
- Church of the Holy Saviour,* King Edward Road, Tynemouth.
- St. George's,* Sea Front, Cullercoats.
- St. Augustin's,* Jackson Street, North Shields.
- Holy Trinity,* Coach Lane, North Shields.
- St. Peter's,* Balkwell, North Shields.
- St. John's,* Percy Main.
- St. Aidan's,* Lynn Road, North Shields.
- Baptist,* Howard Street, North Shields.
- Covenant (Congregational and Methodist),* Front Street, Tynemouth.
- Congregational,* Stephenson Street, North Shields.
- Methodist,* Albion Road, North Shields; Hawkey's Lane, North Shields; Coach Lane, North Shields; Linskill Street, North Shields; Chirton Grange, North Shields; Broadway, Cullercoats; Burdon Street, Percy Main; Mill Street, Chirton; and Ridges Estate.
- Presbyterian,* Northumberland Square, North Shields; Verne Road, North Shields.
- Roman Catholic*—Sunday Mass: St. Oswin's, Front Street, Tynemouth, 7.30, 9.0, 10.30 and 6.30 p.m.. St. Cuthbert's, Bedford Street, North Shields, 8.0, 9.15, 10.15, 11.15; St. Joseph's, Wallsend Road, Chirton, North Shields, 6.45, 8.0, 9.0, 10.0, 11.0 a.m.
- Salvation Army,* Howard Street, North Shields.
- Scandinavian Lutheran,* Borough Road, North Shields.
- Pentecostal Mission,* 1 Regent Terrace, North Shields.
- Synagogue,* 29 Linskill Street, North Shields.



**SERVICE**

**JAMES R. DODDS LTD.**

Roofing  
Contractors

BUILDERS' AND PLUMBERS' MERCHANTS

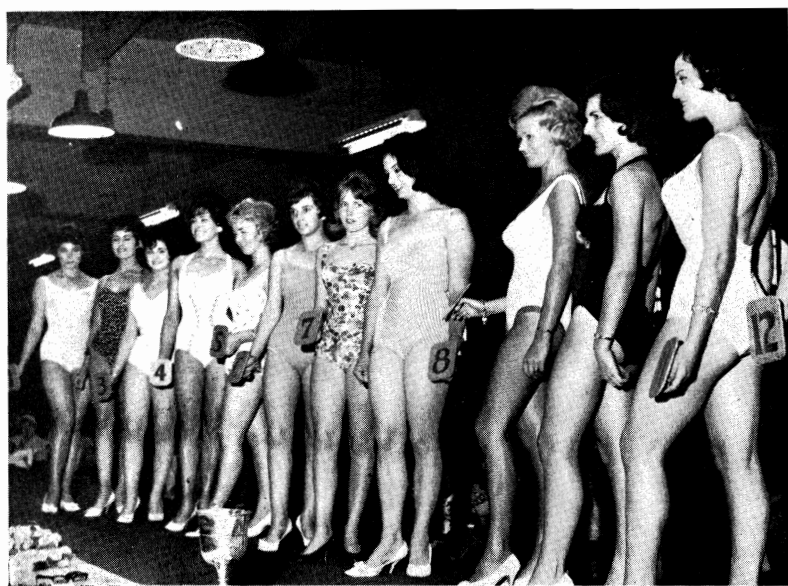
103 TYNEMOUTH ROAD NORTH SHIELDS

Telephone: 172



VIEW FROM THE PIER SHOWING THE PRIORY RUINS AND THE COASTGUARDS HEADQUARTERS

COMPETITORS IN THE FINAL OF THE 1961 "MISS TYNEMOUTH" CONTEST





LONG SANDS (CENTRE) LOOKING NORTH TOWARDS CULLERCOATS

ANOTHER VIEW OF THE LONG SANDS (SOUTH END)



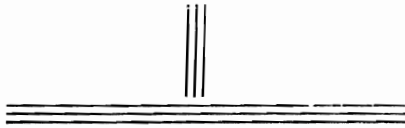
Telephone: N.S. 4144 (5 lines)

Estimates free

# **GEORGE M. BILCLOUGH LTD**



*Plumbers,  
Heating  
and  
Sanitary Engineers*



131 Bedford Street  
NORTH SHIELDS



# G. DAVIDSON & SONS LTD.

*MAIN FORD DEALERS*

**WHITLEY ROAD - WHITLEY BAY**

---

SALES AND SERVICE  
REPAIRS AND OVERHAULS

---

SELF DRIVE HIRE CARS

ANGLIAS AND CONSULS  
AVAILABLE

---

QUALITY USED CARS ALWAYS IN STOCK

---

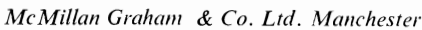
VISIT OUR MODERN SHOWROOMS

Only 2 minutes from Coast  
and see a splendid array of new **Ford** cars

PETROL STATION OPEN UNTIL 9 p.m.







# PRIORY COACHES

## OPERATE DAILY COACH TOURS

During Summer Months — Easter - September

From **TYNEMOUTH & NORTH SHIELDS**

To places of Historical Interest and Beauty

*Including —*

EIGHT LAKES

EDINBURGH

HARROGATE

SCARBOROUGH

NORTHUMBRIA

ALNWICK CASTLE

ROMAN WALL

BAMBURGH

HOLY ISLAND

ST. MARY'S LOCH

to mention a few from our large selection of Day and Half-Day Tours. Also Morning, Afternoon and Evening Tours.

---

Extended Tours (*inclusive with Hotels and Meals*)

LLANDUDNO (8 days)

BOURNEMOUTH (9 days)

SCOTLAND (7 days)

WESTON-SUPER-MARE (8 days)

---

## LUXURY COACHES FOR ALL PARTY TRAVEL

Conferences, Late Dances, Sports and Social Outings

29, 33, 36 & 41 seater Coaches.

---

*Enquiries, Quotations and Itineraries . . .*

## **Priory Motor Coach Company**

59 CHURCH WAY - NORTH SHIELDS

Telephone North Shields 283

# **REX CINEMA**

## **NORTH SHIELDS**

*Tel.: 543*

**ALWAYS A GOOD SHOW**

---

SEE LOCAL PRESS FOR  
PROGRAMMES AND SCREENING TIMES

Buses stop at the door.

---

## **REX BINGO & SOCIAL CLUB**

**THE BIGGEST & BEST IN THE AREA**

SUNDAYS AT 7.30 p.m.

Doors open 6.00 p.m.

WEDNESDAYS AT 2.30 p.m.

Doors open 1.30 p.m.

**MEMBERS ONLY**

APPLICATION FORMS AVAILABLE UPON REQUEST

---

*You must be a Registered Member at least 24 hours before  
you can use the Club*

FOR....

*Car Sales and Service*

CONSULT

**Coast Road Motor Co.**

*Agents for*

**Morris Cars and Commercials**

**Wolseley :: MG :: Austin**



REPAIRS AND SERVICING  
CARRIED OUT BY EXPERTS  
WITH ALL THE LATEST  
EQUIPMENT



**Queen Alexandra Road**  
**North Shields**

TELEPHONE : N.S. 71355—2 lines.

CHEMISTS and WINE MERCHANTS

# David W. Garriock

LTD.

4 Queensway, Tynemouth

Telephone : NORTH SHIELDS 71043

---



*Sole Agents for*

PICOT - CHANEL

*also*

COTY - YARDLEY

MAX FACTOR

WINES FOR ALL OCCASIONS

---

24 HOUR DEVELOPING & PRINTING

COLOUR FILMS

---

BABY REQUISITES

---

SUN GLASSES — SUN TAN LOTION

# DRYDEN

GLAZING CONTRACTORS

SCHOOLS  
FACTORIES  
HOSPITALS  
HOUSES

— :: —

MIRROR MANUFACTURERS  
LEAD GLAZING  
VITROLITE  
GLASS BLOCKS  
AND  
ALL WORK ON GLASS

G. M. Dryden Limited

HOWARD STREET - - NORTH SHIELDS

*Telephone :* NORTH SHIELDS 1934—3 lines

---

*For an  
enjoyable holiday  
or for  
GOOD BEER  
in COMFORT choose  
an*  *Hotel*



**THE PARK**

GRAND PARADE  
TYNEMOUTH



**THE BAY**

FRONT STREET  
CULLERCOATS



**SCOTTISH & NEWCASTLE BREWERIES LTD**

---

FOR PERSONAL ATTENTION

VISIT

# *Maison Jays*

*FOR GOOD HAIR DRESSING*

—::—

**72 FRONT STREET TYNEMOUTH**

*Tel. NORTH SHIELDS 72684*

*Prop. : MARGARET POTTINGER*

ESTABLISHED 1932

# THE WOOL SHOP

E. M. WOOD

**9 & 9a ST. GEORGE'S ROAD**

**CULLERCOATS**

—::—

WOOLS - HOSIERY - KNITWEAR - SKIRTS

LINGERIE - SWIMWEAR - ETC.

*Personal Service and Advice on Knitting Problems*

We Stock all the Latest and Best in Knitting Wools



# **Castles (Whitley Bay) Ltd**

Managing Director: J. L. HARRISON

Director: J. L. CRUICKSHANKS

## **Building Contractors**

135 Tynemouth Road  
**NORTH SHIELDS**

*Telephone: NORTH SHIELDS 73*

# **COCKBURNS LIMITED**

**CARDONALD**

**ENGINEERS**

---

*Steam Valve Specialists  
Repair and Maintenance Station*

---

Union Road - Fishquay  
**Nth. SHIELDS**

Telephone: 2972

Phone: NORTH SHIELDS 2712

Cameras and Films  
Colour Processing

# *Auty's Studio*

**Photographers**

Specialists in Wedding Photography  
Colour and Black & White

Child Studies  
Portraits

**FRONT STREET  
TYNEMOUTH**

**ESTABLISHED 35 YEARS**

# **Moor's Modern Dairy**

(John Moor, Proprietor) and Sons

*Specially Licensed by the Ministry of Health to sell  
Fresh Farm Tuberculin Tested Milk*

**Burnside Road - Whitley Bay**

**Telephone: Whitley Bay 2-0994**

**ALL GRADES OF MILK SUPPLIED & FRESH CREAM**

*Telephone :* WHITLEY BAY 27103

*Hardware*

**G. SCOTT**

*Ironmonger*

**19 FARRINGDON ROAD**

**MARDEN FARM ESTATE - TYNEMOUTH**

GARDEN REQUISITES — PET FOODS  
HANDICRAFT AND BUILDING SUPPLIES — FANCY GOODS

TYNEMOUTH

**A. A. CHAMBERS**

(TURF ACCOUNTANT)

**29 RAILWAY TERRACE**

**NORTH SHIELDS**

*Tel. :* NORTH SHIELDS 2949 - 4161 - 4162

NORTH SHIELDS

WHITLEY BAY

CULLERCOATS

*If you are . . .*

ON HOLIDAY - RESIDING - TRADING - MANUFACTURING  
in or near Tynemouth . . .

WE HAVE YOUR NEEDS

**S. R. GLADSTON & SON LTD**

THE IRONMONGER

99 Bedford Street, North Shields - 10 Front Street, Tynemouth  
4 St. Georges Road, Cullercoats

*FISH and CHIPS...*

The cheapest ready cooked meal available today  
See you get them from . . .

**J. E. WHITLEY**

**59 HUDLESTON STREET - CULLERCOATS**

*Est. 1928      All Varieties of Fish fried      Est. 1928*

*Open every evening and Friday and Saturday Lunch Time*

**HADRIAN**

*for* **GROCERIES AND PROVISIONS**

**QUALITY FOODS  
AT LOWEST PRICES**

BRANCHES IN NORTH SHIELDS  
AND THROUGHOUT TYNESIDE  
OFF LICENCES, BEER, WINES  
AND SPIRITS

**DELIVERY SERVICE**

**RETAILERS OF GROCERIES**

**PROVISIONS**

**BEER**

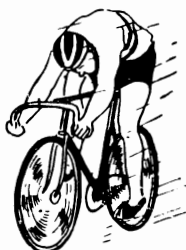
**WINES AND SPIRITS**

*Catering Suppliers to :*  
**HOTELS - CAFES  
BOARDING HOUSES  
CANTEENS . . . . .**

*Head Office and Warehouse :—*

**NORHAM ROAD - WEST CHIRTON - NORTH SHIELDS**

**TEL. 3871/2**



**ROBT. LAVERICK**

**THE BICYCLE SHOP**

**CULLERCOATS**

**SERVICE AFTER SALE**

# ACCOMO

## EVERITT HOUSE

Tel. Whitley Bay 21568

Situated on promenade facing Sea. Ideal position. Most pleasant. Hot and Cold. Comfortable Spacious Lounge with T.V. Excellent Food. Liberal Tables and a varied menu. Open all year round.

Under Personal Supervision of

Mrs. L. E. Bramble.

Everitt House,

46 Beverley Terrace,  
Cullercoats.

---

## MRS. R. H. WILDES

Full Board or Bed and Breakfast accommodation. Corner house. Next to three bus stops. Overlooking the Bay. Excellent food with varied menus. Under personal supervision. Open all the year round.

53 Beverley Terrace,

Cullercoats,

Northumberland

---

Telephone

Whitley Bay 2-5836

---

## MRS. GRANT

Full Board or Bed and Breakfast accommodation. Home cooking. Exceptionally pleasant position overlooking Bay. Under personal supervision of the Proprietress.

26 Hotspur Street,

Tynemouth.

---

## MRS. M. MARSHALL

Full Board or Bed and Breakfast accommodation. Running water all bedrooms. One minute sea front and station.

22 Percy Avenue,

Cullercoats,

Tynemouth

---

Telephone

Whitley Bay 24619

---

## MRS. ROSS

Full Board Residence or Bed and Breakfast. Hot and Cold running water in rooms. Excellent home cooking. Very homely atmosphere. Moderate terms. Five minutes to all bus routes and station.

21 Spring Terrace,

North Shields.

---

## MRS KELLY

Full Board Residence or Bed and Breakfast. Excellent food. One minute sea front and station.

19 Percy Avenue,

Cullercoats

Tynemouth.

# D A T I O N

## MRS. F. LITTLE

Full Board Residence or Bed and Breakfast. One minute from sea front and station. Excellent home cooking. Moderate terms.

20 Percy Avenue,  
Cullercoats  
Tynemouth.

---

## MRS. C. EMMERSON

Bed and Breakfast accommodation. Splendid position overlooking Bay. Children welcome. Reasonable charges.

Telephone 36 Hotspur Street,  
North Shields 74724 Tynemouth

---

## MISS M. A. ABERNETHY

Offers Part Board Residence or Bed and Breakfast accommodation. Central Residential district. Near sea front and all bus routes.

Telephone 19 Cresswell Avenue,  
North Shields 71014 North Shields.

---

## MISS S. M. KNOX

In a commanding position on sea front overlooking bay. Offers Full Board Residence or Bed and Breakfast and Evening Meal. First class cuisine. Chef-prepared under personal supervision of the Proprietress.

Telephone "Cliffholme",  
North Shields 71462 Warkworth Terrace,  
Tynemouth.

---

## MRS. H. DRAPER

Full Board Residence or Bed and Breakfast together with Evening Meal if required. One minute from sea front and station.

11 Eleanor Street,  
Cullercoats  
Tynemouth.

---

## MRS. WAKENSHAW

Full Board Residence or Bed and Breakfast. One minute from sea front.

9 St. Oswins Avenue,  
Cullercoats.

ESTABLISHED 1910

Telephone: N.S. 73117 (2 lines)

# SIMS & BROWN

ESTATE AGENTS, AUCTIONEERS  
and VALUERS

Expert advice always available



67 HOWARD STREET  
NORTH SHIELDS

also at EAST HOWDON ON TYNE

Agents for Abbey National Building Society

# A. MOWAT

Commission Agent  
*for*  
Horse racing and Football



35 Howdon Road  
NORTH SHIELDS

*Telephones*  
**1780-1-2**  
After June 73236

*Telegrams*  
**MOWAT 1780 NORTH SHIELDS**  
After June 73236

1A JOHN STREET, CULLERCOATS,  
NORTH SHIELDS

### **CULLERCOATS BEACH, NORTH SIDE**

When on Cullercoats Beach pay us a visit for Teas, Light Refreshments, etc., and be sure of satisfaction.

**F. W. POOK**

### **The North Shields Fish Meal & Oil Co. Ltd**

*Manufacturers of*

White Fish Meal, Herring Meal,  
Pure Fish Guano and Herring Oil

**LOW LIGHTS — NORTH SHIELDS**

### ***Restaurant Norge***

Open Monday to Saturday, 9 a.m. to 6 p.m.

Morning Coffee served 9 a.m. to 12 noon

Lunches 12 to 2.30 p.m.

Afternoon and High Teas served 2.30 p.m. to 6.0 p.m.

Weddings and Private Parties catered for

**ALBION ROAD, NORTH SHIELDS**

*Telephone: North Shields 3148*

### **PLASTIX & METAL ENGRAVING Co. Ltd**

*We specialise in the following:*

**Chemically Engraved, Printed, Machine and Cast  
Nameplates in all Metals and Plastics. Instrument  
Scales, Rules, Dials, etc.**

**BUSINESS AND DOOR NAMEPLATES**

**PLASTIC FACIA SIGNS OUR SPECIALITY**

**20/23 PRUDHOE ST., NORTH SHIELDS**

**Telephone: North Shields 294**



# INDEX TO ADVERTISERS

	PAGE
Auty's Studio, Photographers, Tynemouth .. .. .	49
Baxter's Tea House, Tynemouth .. .. .	30
Bilclough Geo. M. Ltd., Plumbers, North Shields .. .. .	38
Brittains, Furnishers, North Shields .. .. .	20
Carlton Cinema, Tynemouth .. .. .	18
Castles (Whitley Bay) Ltd., Builders, North Shields .. .. .	48
Chambers, A. A., Turf Accountant, North Shields .. .. .	50
Cliffedge Guest House, Cullercoats .. .. .	17
Coast Road Motor Co., North Shields .. .. .	43
Cockburns Ltd., Engineers, North Shields .. .. .	48
Davidson, G. & Sons Ltd., Auto Sales, Whitley Bay .. .. .	39
Dodds, J. R., Builders Merchants, North Shields .. .. .	34
Dryden, G. M. Ltd., North Shields .. .. .	45
Garriock, D. W. Ltd., Chemist, Tynemouth .. .. .	44
Gladston, S. R. & Son Ltd. .. .. .	50
Grand Hotel, Tynemouth .. .. .	1
Gray, H. & Sons, Painters, North Shields .. .. .	37
Hadrian Supply Co. Ltd., Grocers, North Shields .. .. .	51
Laverick, R., Cycles, Cullercoats .. .. .	51
Maison Jays, Ladies Hair Stylist, Tynemouth .. .. .	47
Moors Modern Dairy, Whitley Bay .. .. .	49
Mowat, A., Commission Agents, North Shields .. .. .	54
Mundy, W. C. Ltd., Plant Hire, North Shields .. .. .	I.B.C.
North Shields Fish Meal & Oil Co. Ltd., The, North Shields .. .. .	55
North Shields Permanent Building Society, North Shields .. .. .	28
Park Hotel, North Shields .. .. .	I.F.C.
Peacock, Mrs. L., Wools, Tynemouth .. .. .	33
Plastix & Metal Engraving Co. Ltd., North Shields .. .. .	55
Plaza, Sea Front, Tynemouth .. .. .	4
Pook, F. W., Snack Bar, Cullercoats .. .. .	55
Priory Motor Coach Co., North Shields .. .. .	41
Restaurant Norge, North Shields .. .. .	55
Rex Cinema, North Shields .. .. .	42
Scott, G., Ironmonger, Tynemouth .. .. .	50
Scottish & Newcastle Breweries Ltd. .. .. .	46
Sims & Brown, Estate Agents, North Shields .. .. .	54
Tombling, H., Grocer, Tynemouth .. .. .	33
Turnbull, E. & Son Ltd., Taxi Service, North Shields .. .. .	29
Turnbull's Garage, North Shields .. .. .	29
Tynemouth Corporation (Parks & Baths Charges) .. .. .	2 and 3
Tynemouth and District Transport Co. Ltd., The .. .. .	O.B.C.
Whitley, J. E., Supper Bar, Cullercoats .. .. .	51
Wool Shop, The, Cullercoats .. .. .	47

## ACCOMMODATION

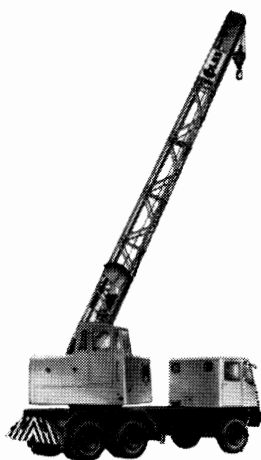
Abernethy, Miss M. A., North Shields .. .. .	53
Bramble, Mrs. L. E., Cullercoats .. .. .	52
Draper, Mrs. H., Tynemouth .. .. .	53
Emmerson, Mrs. C., Tynemouth .. .. .	53
Grant, Mrs., Tynemouth .. .. .	52
Kelly, Mrs., Cullercoats .. .. .	52
Knox, Miss S. M., Tynemouth .. .. .	53
Little, Mrs. F., Cullercoats .. .. .	53
Marshall, Mrs. M., Cullercoats .. .. .	52
Ross, Mrs., North Shields .. .. .	52
Wakenshaw, Mrs., Cullercoats .. .. .	53
Wildes, Mrs. R. H., Cullercoats .. .. .	52

# **CRANE HIRE SERVICE**

**‘Coles’ Lorry  
Mounted & Self  
Propelled Crane**

**3 to 25 tons**

**Jib lengths to  
120 ft.**



## **W. C. MUNDY LTD**

**Hylton Street Sidings  
North Shields**

**70127/8**

*The*  
**TYNEMOUTH AND DISTRICT TRANSPORT CO., LTD.**

*and*  
**WAKEFIELD'S MOTORS LTD.**

OPERATE OMNIBUSES THROUGHOUT THE DISTRICT

*Write, Phone or Call :*  
NORMAN TERRACE  
PERCY MAIN  
NORTH SHIELDS

Phone: North Shields 571

Buses from Tynemouth every few minutes for Whitley Bay and North Shields (connecting with the Ferry to South Shields). Also at frequent intervals for Blyth, Wallsend, Newcastle and Gateshead

◆ ◆  
NORTHUMBERLAND  
SQUARE  
NORTH SHIELDS

Phone : North Shields 881

◆ ◆  
Modern Coaches are available for

PRIVATE PARTIES,  
SPECIAL TRIPS,  
WORKS OUTINGS, etc.

◆ ◆  
THE PROMENADE  
(opposite Empress Gardens)

WHITLEY BAY

Phone : Whitley Bay 24494

◆ ◆  
DAY, HALF-DAY and  
EVENING TOURS . . . . .  
operate from T y n e m o u t h  
throughout the Season.